



EXPOSÉ  
USED LADLE CARRIER  
KIROW MULTI FLEXUS MF L 80

# EXPOSÉ

## USED LADLE CARRIER MF L 80



Contact:

KIROW ARDELT GmbH  
Branch Ulm

Sales Department

Phone: +49 731 94652 - 0  
Fax: +49 731 94652 - 11  
Mail: [sales@kirow.de](mailto:sales@kirow.de)

Refer to: Used Equipment MF L 80

# EXPOSÉ

## USED LADLE CARRIER

Producer:	KIROW Leipzig
Type:	MF L 80
Year:	2015
Number:	4 piece
Serial number:	970005-008
Operating hours:	less than 500
Location:	South East Asia





# EXPOSÉ

## USED LADLE CARRIER





# TECHNICAL DATA (no warranty)

## GENERAL DATA

• Payload continuous operation (ladle & content)	approx. 80.000 kg
• Dead weight of transporter	approx. 75.000 kg
• Total weight of transporter (continuous operation)	approx. 155.000 kg
• Overall length	approx. 12.100 mm
• Overall width	approx. 5.300 mm
• Overall height (cabin protection canopy)	approx. 4.800 mm
• Overall height (dump arms / ladle in driving position)	approx. 6.000 mm
• Overall height (ladle in pick-up or deposit position)	approx. 6.500 mm
• Wheel base	approx. 6.000 mm
• Turning radius inside	approx. 2.650 mm
• Turning radius outside	approx. 10.400 mm
• Steering angle	approx. +/- 50 °

## PERFORMANCE DATA

Diesel Engine  
Manufacturer: CAT  
Model type: C 11 – 350  
Output: 261 kW @ 2.100 rpm

Cooling system: water-cooled  
Exhaust emission: 2004/26/EC Stage 3a or US 40 CFR 89 Tier 3 (EPA3a)

Traction at 1 km/h approx. 28.000 daN

## Gradient ability

(rolling resistance 25 kg/t, static friction 0,4μ)

▪ Loaded with empty ladle	approx. 8 %
▪ Loaded with nominal payload	approx. 5 %

## Speed

(rolling resistance 25 kg/t, on dry and level road)

▪ Loaded with empty ladle	approx. 20 km/h
▪ Loaded with nominal payload	approx. 15 km/h
▪ Reduction of speed up to 6km/h is possible	

## TIRES & AXLE LOADS

▪ Tires tractor unit	2 x 29.5 R25 EM
▪ Tires trailing unit	16 x 12.00 – 20 SE
▪ Front axle load in continuous operation	approx. 37.000 kg
▪ Rear axle load in continuous operation	approx. 118.000 kg

## DRIVE & BRAKE AXLES

▪ Axle tractor unit	drive axle with hydraulic wet disc brake	1
▪ Axles trailing unit	pendulum axles with brakes	2
	pendulum axles without brakes	2

# TECHNICAL EQUIPMENT / SUPPLIED (no warranty)



## Basic equipment

- Articulated Steering Caterpillar-Design
- Drive axle Kessler with hydraulic wet disc brake
- Pendulum axles BPW with brakes
- Two independent brake circuits (front and rear axle)
- Cabin with two control stands and turnable driver seat
- Webasto heating system Air Top 2000 D
- Electronic gear shifting system
- Overload protection with overload display in cabin
- Optical display for support system in cabin
- Hydraulic oil tank made of stainless steel and interface for refilling
- Engine hood with electro-hydraulic lift system
- Electro-hydraulic emergency steering system
- Extensive protective cover for tractor and trailing unit
- 2 fire extinguisher 12 kg (1 piece at the tractor unit, 1 piece at the cabin)

## Additional equipment

- Electrically closable blinds
- Movable protective glasses behind the closable blinds
- Camera system for hook left side (pick up)
- Pedestal for standing transport of the slag pot
- Self cleaning pre cleaner for engine air filter
- Air conditioner in driver's cabin

# TECHNICAL EQUIPMENT / SCOPE OF SUPPLY (no warranty)

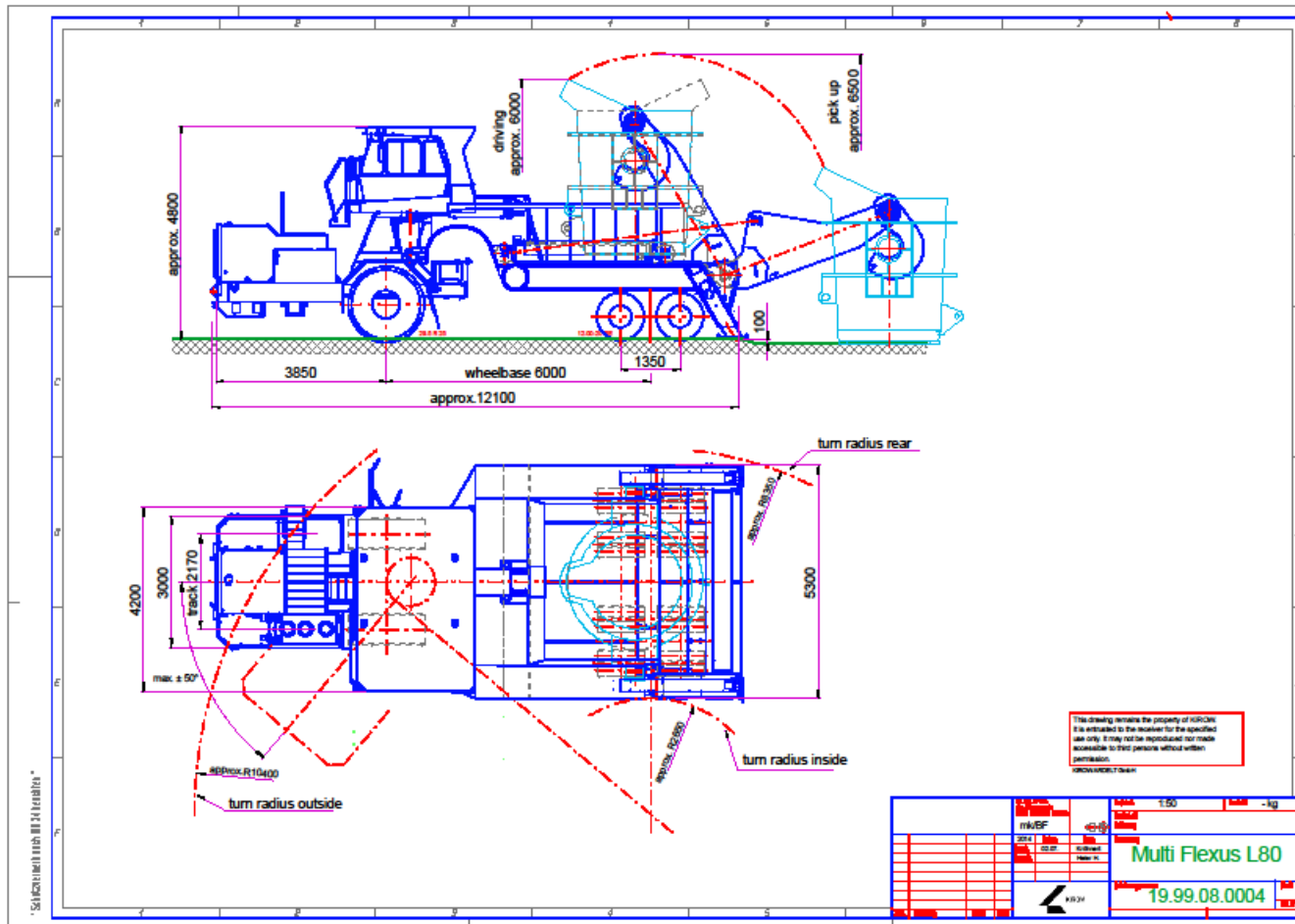
## Current condition

- Vehicle ready for operation
- The operating company offers a site visit after arrangement
- Very low operating hours!!!





# VEHICLE DRAWING





# LADLE DIMENSIONS

